

# Highspeed data transfer

Automated data interchange between CargoWise One  
an external systems for Prime Cargo

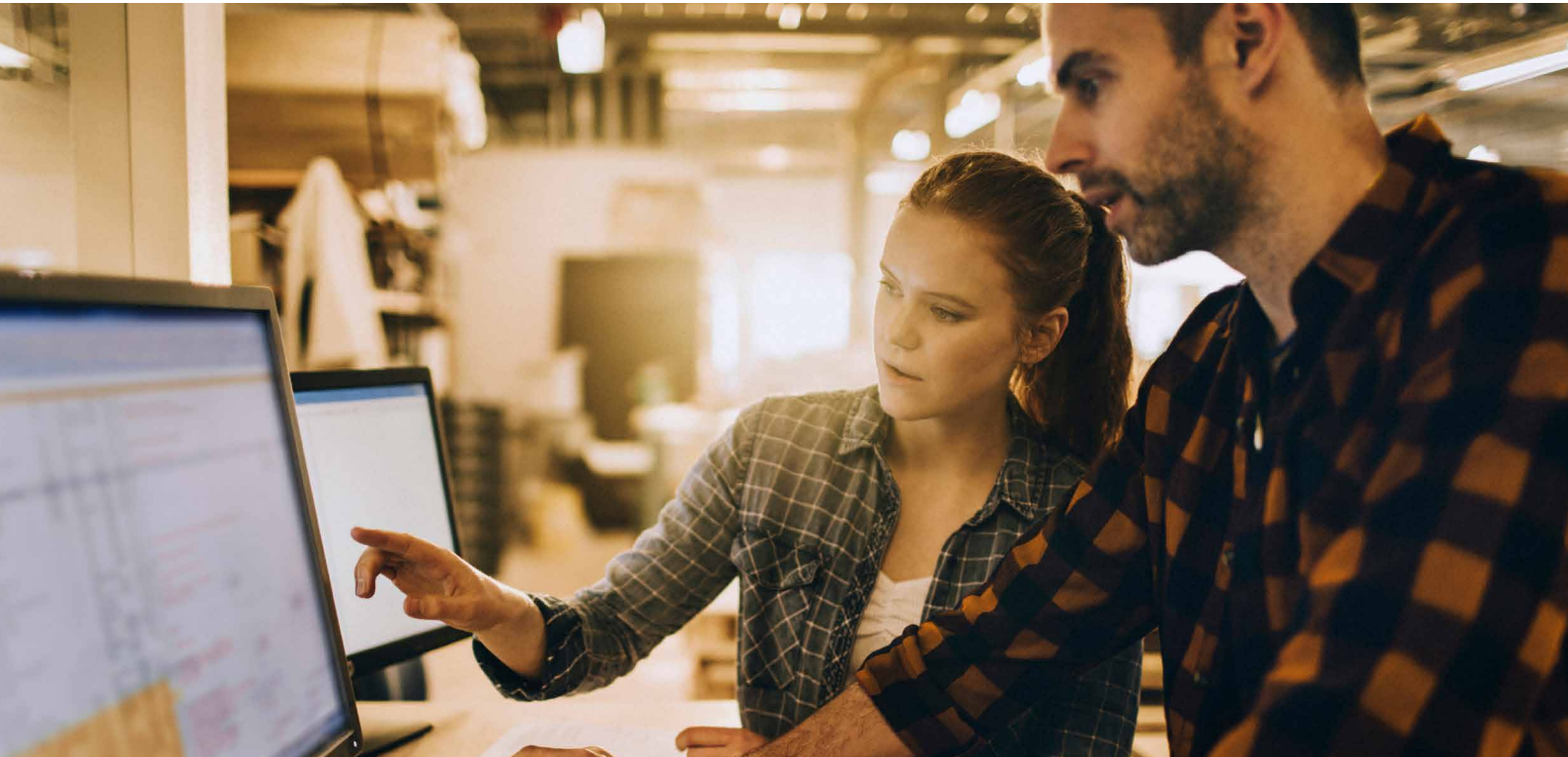
Prime Cargo was seeking best practice consulting, process and application support for CargoWise One and back in March 2016, Prime Cargo and AKQUINET started their collaboration in that framework.

## Since then

AKQUINET accompanied Prime Cargo before, during and after Go-Live. Major topics Prime Cargo consulted AKQUINET for are the setup of CargoWise One to support their business processes and the development of interfaces. After Go-Live in different countries and offices operational processes have been stabilized and improved continuously.

“Prime Cargo has always met a very professional team of consultants from AKQUINET. AKQUINET has had a structured and committed approach to our project. It was important for Prime Cargo to find a reliable and engaged partner for this project as deadlines were tight. AKQUINET proved to be flexible and solutions-oriented and the project would not have succeeded without them.”

**DIANA BACH-LAURSEN,**  
Prime Cargo



## Highlights

Prime Cargo aimed for a high degree of automation by connecting external systems and partners as well as client systems with CargoWise One. AKQUINET provided consulting services for these integrations by allocating specialized Know-How. Prime Cargo now benefits from automated data transfer between CargoWise One and other systems.

## Measurable Business Results

In regards to the implementation and support on Electronic Data Interchange (EDI) Prime Cargo sent and received over 55.000 messages in the operational and financial context.

## Our expertise:

As the largest certified WiseService Gold Partner in continental Europe, we help our globally operating customers to use and utilize CargoWise One optimally and to extend the system by useful components. Deep industry and system know-how are the basis for the successful consulting and implementation of

## About Prime Cargo

Prime Cargo is a successful international forwarding company based in Kolding, Denmark offering services and solutions in the areas Warehousing, Air and Ocean Freight Forwarding, Customs Clearance and much more. With its own offices in Copenhagen, Szczecin in Poland, Chicago in the US and Hong Kong, Shanghai, Beijing, Qingdao, Xiamen, Shenzhen and Ningbo in China as well as an agency network in the rest of the world, Prime Cargo provides professional and attentive services to its customers.

Figures: 10 locations | 450 employees | 126 Agents



CargoWise One for our customers and us. This also applies to our application support and trainings. Our employees have many years of industry, international project and operational experience with CargoWise One as well as the development of apposite solutions. We are happy to advise you.

